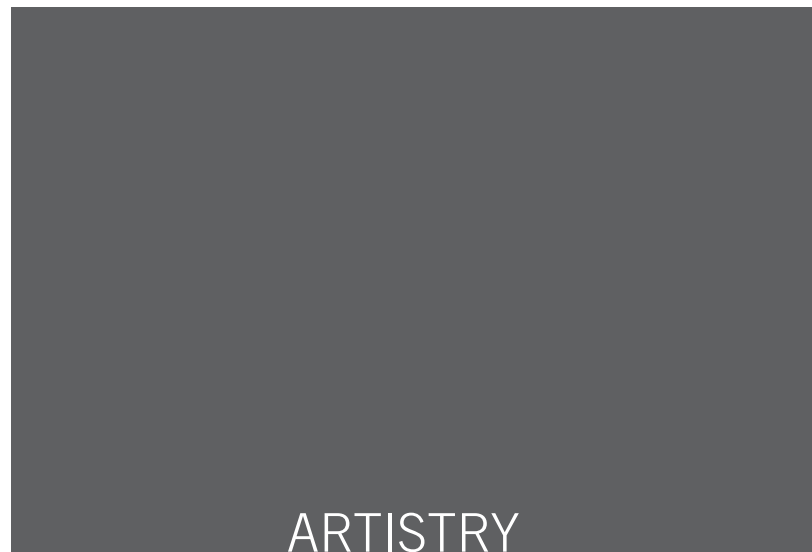


■ senior living centers ■ resort living ■ club seating ■ academic institutions ■ corporate conference centers ■ boutique hotels ■ executive dining ■ senior living centers ■ resort living ■ club seating ■ academic institutions ■ corporate conference center ■ boutique hotels ■ executive dining ■ senior living centers ■ resort living ■ club seating ■ academic institutions ■ corporate



ARTISTRY

harden
HOSPITALITY

senior living centers ■ resort living ■ boutique hotels ■ executive
conference centers ■ club seating ■ corporate conference cen
seating ■ resort living ■ boutique hotels ■ academic institutions ■

ARTISTRY

designed by Blake Tovin

- sleek, transitional / contemporary styling
- solid American Ash construction
- quarter-sawn cuts for accentuated grain patterning
- specially-designed finishes for wide range of styling
- complements upscale boutique & resort hospitality settings
- only SFI®-certified wood used
- full line of bedroom, dining & occasional / lounge furniture
- anodized, powder-coated aluminum hardware
- custom options to spec available
- complementing seating available



Wall Bed Unit

Consists of 1927 Divi Wall Bed,
1928 Divi Night Stands (2),
1929 Divi Panels (2) /
Flannel Finish shown

5/0	121W	85 1/4 L	48H
6/6	139W	85 1/4 L	48H
6/0	139W	89 1/4 L	48H

utive dining ■ club seating ■ academic institutions ■ corporat
nters ■ resort living ■ boutique hotels ■ executive dining ■ clu
corporate conference centers ■ club seating ■ executive dining



enior living centers ■ resort living ■ boutique hotels ■ execu
 onference centers ■ club seating ■ corporate conference cen
 eating ■ resort living ■ boutique hotels ■ academic institutions ■



H1998 Wood Panel Platform Bed

5/0 65W 84 1/2 L 58 1/2 H
 6/6 83W 84 1/2 L 58 1/2 H
 6/0 78W 89 1/2 L 58 1/2 H
 Cocoa Finish shown



H1908 Upholstered Platform Bed

5/0 65W 84 1/2 L 58 1/2 H
 6/6 83W 84 1/2 L 58 1/2 H
 6/0 78W 89 1/2 L 58 1/2 H
 Cocoa Finish shown

Option shown: French Natural Nail Head trim all around



1929 Panel

28W 2D 24H
 For use with 1928 Night Stand / Flannel Finish shown



1927 Bed

5/0 65W 85 1/4 L 48H
 6/6 83W 85 1/4 L 48H
 6/0 78W 89 1/4 L 48H
 Flannel Finish shown

utive dining ■ club seating ■ academic institutions ■ corporat
nters ■ resort living ■ boutique hotels ■ executive dining ■ clu
corporate conference centers ■ club seating ■ executive dinin



1920 Lingerie Chest

21 1/2 W 20D 55 1/2 H
Flannel Finish shown



1916 Nona Chest

38W 20D 50 1/4 H
Spice Finish shown



alternate styles:

- 1926-100 Media Dresser / Wood Top**
- 1926-200 Media Dresser / Cappuccino Marble Top**
- 1926-300 Media Dresser / Onyx Marble Top**

Center drop-down drawer for video components / eight additional drawers

1925-100 Dresser / Wood Top

1925-200 Nona Dresser / Cappuccino Marble Top

1925-300 Nona Dresser / Onyx Marble Top

65W 20D 41H

Nine drawers / Flannel Finish shown



1928 Night Stand

28W 19D 24 1/4 H
One drawer / Flannel Finish shown



1918 Night Stand

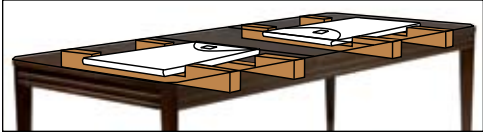
31W 19D 28H
Cocoa Finish shown



1915-100 Night Stand / Wood Top

1915-200 Night Stand / Cappuccino Marble Top
1915-300 Night Stand / Onyx Marble Top
28W 20D 27H
Cocoa Finish shown

senior living centers ■ resort living ■ boutique hotels ■ executive
 conference centers ■ club seating ■ corporate conference cen
 seating ■ resort living ■ boutique hotels ■ academic institutions ■



self-storing leaves



1990-2 Dining Table

74W 42D 30H

Two 21" self-storing aproned leaves, extends to 116" / Shown with one leaf, extends to 95"
 Cocoa Finish shown

also available: **1990-3 Monterey Dining Table** — Three 21" aproned leaves, extends to 137"



1995 Dining Table

60 Diameter 30H

Wood base and top
 Flannel Finish shown



1973 Chair

25W 24D 35H 17 1/2 SD 20SH
 Cocoa Finish shown



1982 Arm Chair

26W 28 1/2 D 46 1/2 H 17W
 19SD 20SH 25 1/2 AH
 Cocoa Finish shown



1985 Picket Back Chair

22 1/2 W 23D 44H 18 1/2 SD 19 1/2 SH
 Cocoa Finish shown

utive dining ■ club seating ■ academic institutions ■ corporat
nters ■ resort living ■ boutique hotels ■ executive dining ■ clu
corporate conference centers ■ club seating ■ executive dinin



1955 Bar

50W 16D 77H

Wood shelves / One sliding door / Touch-sensitive overhead light /
Mirrored back / glass shelf / Formica® work surface / One drawer /
One fixed wine rack (holds 15 bottles)
Cocoa Finish shown



1969 Buffet and Hutch

58W 20D 83 1/2 H

Touch-sensitive overhead lights / sliding glass door / glass shelves
/ wine rack shelf with removable bottle support
Cocoa Finish shown



1966 Buffet

58W 20D 35H

Glass top inserts / removable bottle support
Cocoa Finish shown



1984-100 Buffet/ Wood Top

1984-200 Buffet / Cappuccino Marble Top

1984-300 Buffet / Onyx Marble Top

69W 19D 34 3/4 H

Five drawers / Two doored compartments
Cocoa Finish shown

enior living centers ■ resort living ■ boutique hotels ■ execu
 onference centers ■ club seating ■ corporate conference cen
 eating ■ resort living ■ boutique hotels ■ academic institutions ■



1938-100 Side Table / Wood Top

1938-200 / Cappuccino Marble Top
 1938-300 / Onyx Marble Top
 28W 24 1/4 D 26H
 One drawer
 Cocoa Finish shown



1949-100 Cocktail Table / Wood Top

1949-200 / Cappuccino Marble Top
 1949-300 / Onyx Marble Top
 55 1/2 W 49D 18 1/4 H
 Cocoa Finish shown



1937 Cocktail Table

45 Diameter 17H
 Finished wood shelf / Flannel Finish shown



1939-100 Console / Wood Top

1939-200 / Cappuccino Marble Top
 1939-300 / Onyx Marble Top
 57W 16 1/2 D 32H
 One drawer / Shell Finish shown



1967 Entertainment Console

58W 20D 35H
 Two back panel access holes / one divider thru-hole
 Spice Finish shown

utive dining ■ club seating ■ academic institutions ■ corporat
nters ■ resort living ■ boutique hotels ■ executive dining ■ clu
corporate conference centers ■ club seating ■ executive dinin



1905 Mirror

40 Diameter 1 1/4 D Metal frame
Antiqued glass in outside border /
Clear glass in center



1921 Mirror

60W 1 1/4 D 40H Metal frame
Antiqued glass / Clear glass in center



1932 Mirror

33W 3 3/4 D 33H Metal frame
Antiqued glass in outside border /
Clear glass in center



1941-500 Writing Desk

48W 24D 30H
Pencil drawer
Flannel Finish shown

alternate style:

1941-100 Writing Desk

The same as 1941-500 except without the drawer



1954 Bookcase

42W 15D 78H
Front/back metal accents / can be used in open settings
Cocoa Finish shown

ARTISTRY ASH FINISHES



cocoa



flannel



spice



shell

ARTISTRY STONE OPTIONS



onyx



cappuccino

american white ash

is characterized by its silky texture, color and light highlights from its distinctive white sap wood.

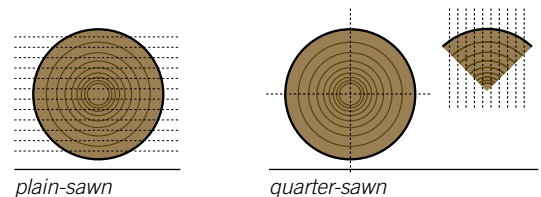
White Ash (*Fraxinus Americana*) is well-known for its strength, durability and attractive aged soft golden finish. Its naturally light raw wood tones and linear grain offers versatility in finishing — as demonstrated by Harden’s custom-designed ash finishes for the Artistry Collection.

In order to maintain Harden’s focus on environmental stewardship, all Artistry product is made from ash derived originating from SFI®-certified New York State hardwood forests — many of which are owned and managed by Harden.

quarter-sawn wood

is characterized by its very linear and somewhat even grain pattern and flecked highlights. Without the dramatic “cathedralling” of tree rings in plain-sawn boards, quarter-sawn wood lends itself to more transitional and contemporary furniture designs, offering a seamless appearance over large surfaces.

Structurally, quarter-sawn wood also offers less warpage and shrinkage since the log is quartered and then cut on 90° angles for tighter, uniform grain.



plain-sawn

quarter-sawn



- solid **wood**
- solid **green**
- solid **design**
- solid **American**

Harden Hospitality provides outstanding quality and service for a wide range of commercial applications. We have a broad selection of furnishings, offer custom design and manufacturing capabilities, and produce and deliver according to your desired schedule.

Harden was founded in 1844 and has enjoyed a long history grounded in the trust we have built with our customers. A founding member of the Sustainable Furniture Council, Harden harvests much of its raw material from 10,000 acres of company-owned timber properties, all certified by the Sustainable Forestry Initiative, and continues its reputation of responsible environmental stewardship.



harden **HOSPITALITY**

HARDEN FURNITURE HOSPITALITY DIVISION

Harden Furniture, Inc.

8550 Mill Pond Way ■ McConnellsville, NY 13401-0002

315 / 675-3600 ■ Fax 315 / 245-2884

hospitality@harden.com

www.hardenhospitality.com

Date of Issue: September 2009
15-085-XXXX XM XX
Printed in the USA

